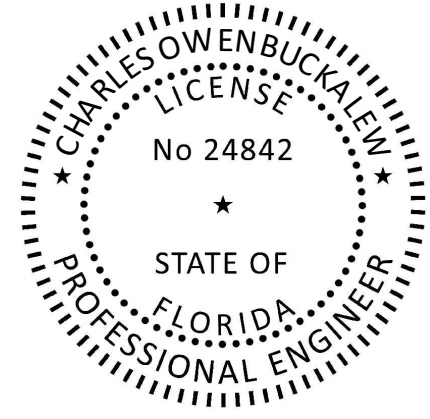
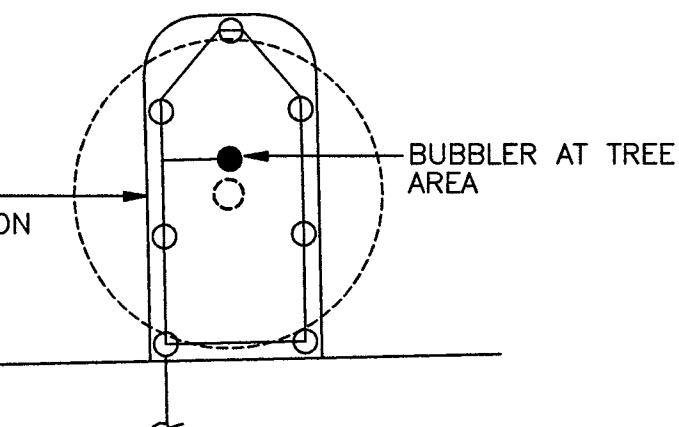
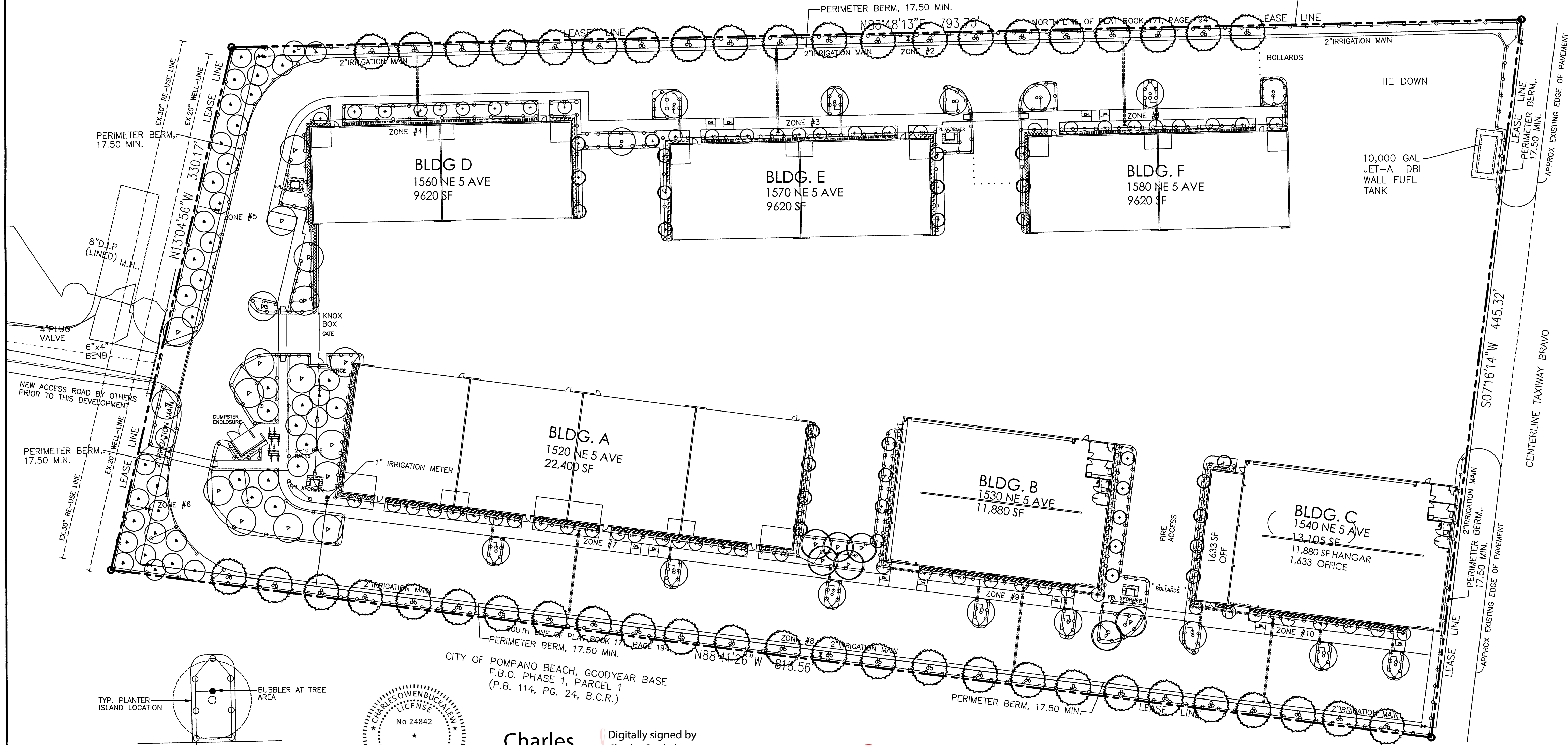


SPRINKLER HEAD SCHEDULE :

| SYMBOL | MODEL NO.(OR EQUAL) | DESCRIPTION | PSI. | GPM. | RAD. |
|--------|---------------------|-------------------|-------|------|--------|
| ⊙ | 570Z-4P-8Q | POP-UP SPRAY (4") | 30-40 | .22 | 8' |
| ⊙ | 570Z-4P-8T | POP-UP SPRAY (4") | 30-40 | .29 | 8' |
| ⊙ | 570Z-4P-8H | POP-UP SPRAY (4") | 30-40 | .44 | 8' |
| ⊙ | 570Z-4P-8TT | POP-UP SPRAY (4") | 30-40 | .59 | 8' |
| ⊙ | 570Z-4P-8F | POP-UP SPRAY (4") | 30-40 | .85 | 8' |
| ⊙ | 570Z-4P-12Q | POP-UP SPRAY (4") | 30-40 | .48 | 12' |
| ⊙ | 570Z-4P-12T | POP-UP SPRAY (4") | 30-40 | .64 | 12' |
| ⊙ | 570Z-4P-12H | POP-UP SPRAY (4") | 30-40 | .96 | 12' |
| ⊙ | 570Z-4P-12TT | POP-UP SPRAY (4") | 30-40 | 1.28 | 12' |
| ⊙ | 570Z-4P-12F | POP-UP SPRAY (4") | 30-40 | 1.92 | 12' |
| ▽ | 570Z-4P-4EST | POP-UP SPRAY (4") | 30-40 | .43 | 4'x15' |
| □ | 570Z-4P-4SST | POP-UP SPRAY (4") | 30-40 | .88 | 4'x30' |
| ▣ | 570Z-4P-4SSST | POP-UP SPRAY (4") | 30-40 | .50 | 4'x18' |

SYMBOL LEGEND :

| SYMBOL | MODEL NO.(OR EQUAL) | MANUF. | DESCRIPTION |
|--------------|---------------------|-----------------------|---|
| ⊞ | GK212-04-0D | TORO MODEL (OR EQUAL) | CONTROLLER - WALL MOUNT |
| ○ | MINI-CLIK II | HUNTER (OR EQUAL) | RAIN SWITCH SENSOR |
| ⊞ | P220-26-06 | TORO MODEL (OR EQUAL) | 1 1/2" SOLENOID VALVE & BOX |
| IRRI. PIPING | | | |
| — | | | MAIN - SDR.26, CLASS 160, PVC. PIPE |
| ----- | | | SLEEVES - SCHEDULE 40 PVC. (SEE PLAN) |
| ---- | | | LATERALS - SDR.26, CLASS 160, PVC. PIPE |
| — | | | PVC FITTINGS |
| NOT SHOWN | | | #14AWG., TYPE U.F., DIRECT BURIAL IRRIG. WIRE |
| NOT SHOWN | | | |



Charles Buckalew
Digitally signed by Charles Buckalew
Date: 2022.08.17 16:27:45 -04'00'

This item has been Digitally Signed and Sealed by Charles O. Buckalew, FL. PE. # 24842 on August 17, 2022. Printed copies of this document are not considered signed and sealed and the signature must be verified on any electronic copies.

| REVISIONS | BY |
|---------------------------------|------|
| 07-06-2022, REVISED IRRIG. PLAN | COB. |
| 08-10-2022, REVISED IRRIG. PLAN | COB. |
| | |
| | |
| | |
| | |
| | |
| | |
| | |
| | |

SITE IMPROVEMENT PLANS FOR
POMPANO BEACH AIR PARK - PARCEL Y

1520-1580 NE. 5th. AVENUE, POMPANO BEACH FLORIDA 33060

Charles O. Buckalew
Consulting Engineering Services, Inc.
801 South Ocean Drive, Suite 201
Hollywood, Florida 33019
C.O.A. Number: 6255
Tele. : (954) 558-1189 Fax. (954) 929-8888



CHARLES O. BUCKALEW, P.E.
FLORIDA REG. NO. 24842

| | |
|-------|-----------|
| DATE | MAY, 2022 |
| SCALE | 1"=30'-0" |
| BY | C.R.W. |
| JOB | MA-2285 |
| SHT | IR-1 |